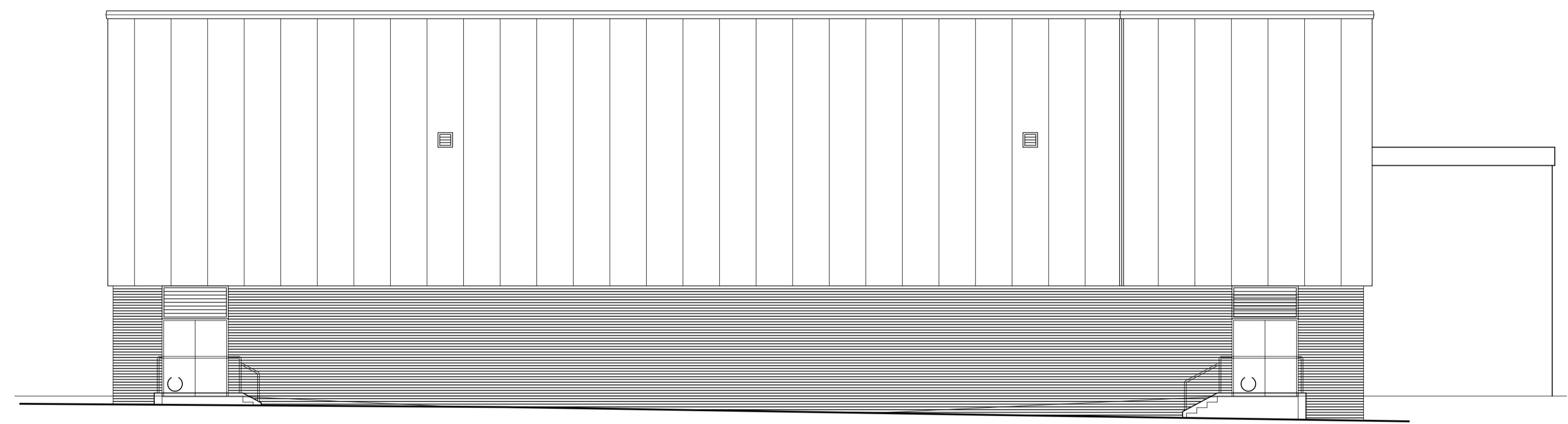
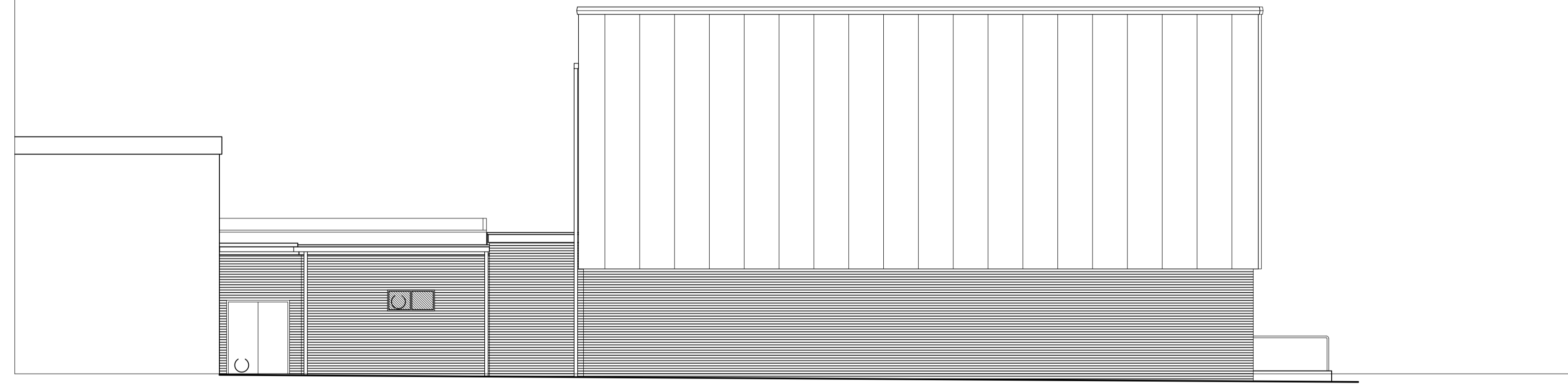




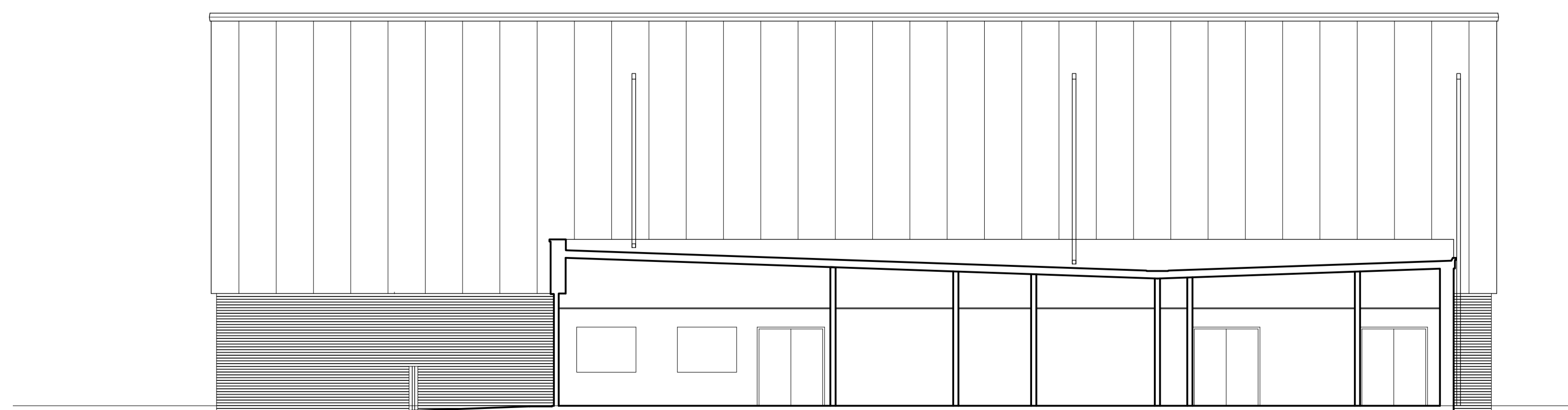
Elevation A



Elevation B

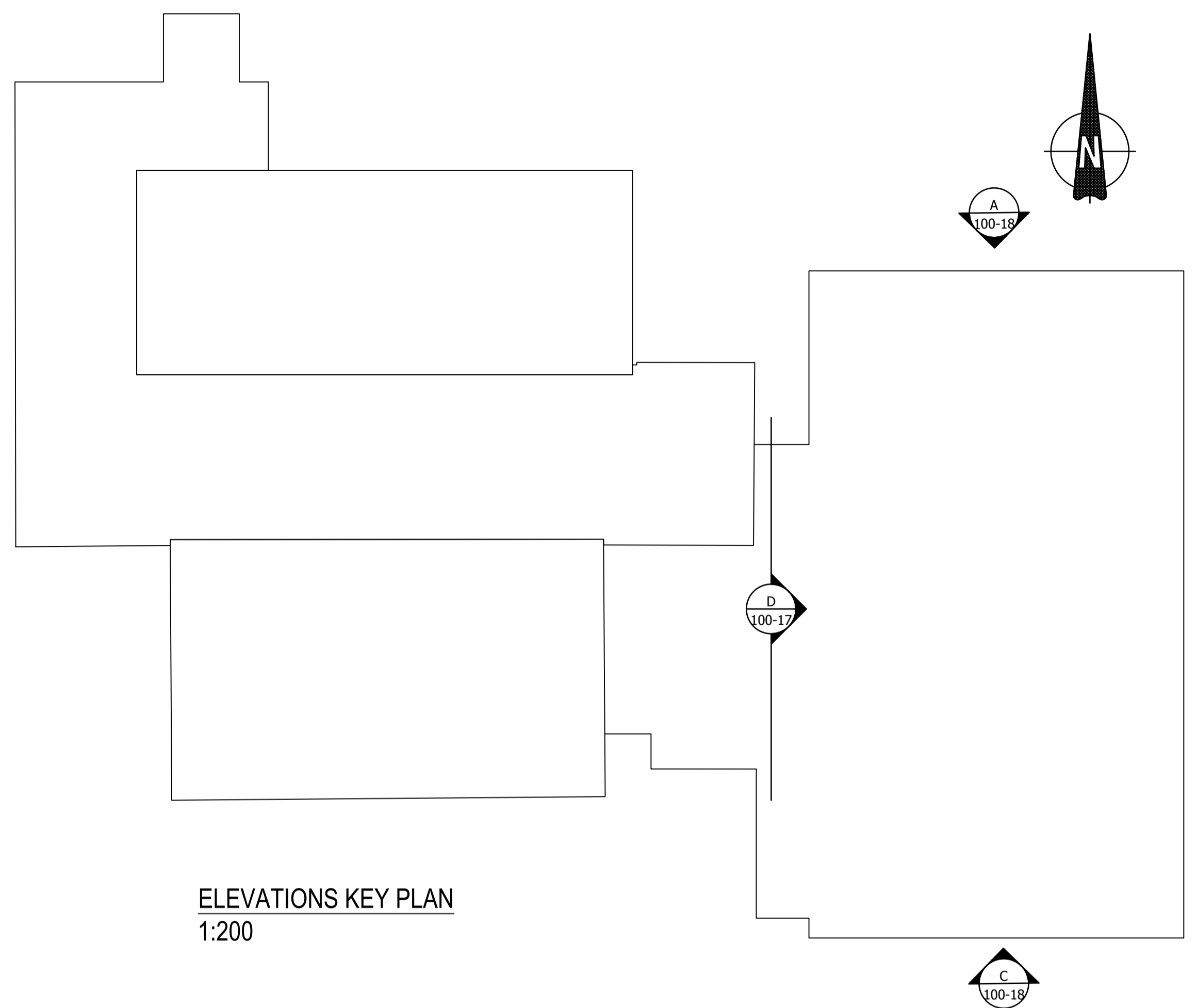


Elevation C

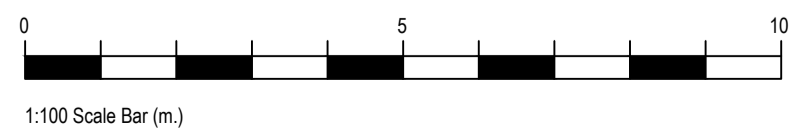


Elevation D

Changing Block shown in section



ELEVATIONS KEY PLAN  
1:200



Rev	Description	Dm	Chk	Date
P3	Ends of ramps elevated to Elevations A & C. Internal viewing windows shown on elevation D	EB	RA	15/10/2018
P2	Scale amended to 1:100. All elevations on one sheet.	EB	RA	15/10/2018
P1	Issued for Planning	PC	RA	17/08/2018

**HOWARTH LITCHFIELD**  
 4 Old Ewel, Durham, DH1 3HL T: Durham(0191) 3849470 E: hlp@hpluk.com  
 16-25 Bastwick Street, London, EC1V 3PS T: (0207) 2518005 E: hpl@hpluk.com  
 www.howarthlitchfield.com

Copyright and all intellectual property rights remain vested in Howarth Litchfield Partnership Limited subject to the disclaimer notes embodied on this and all associated drawings and documents.

Drawing Status: PRELIMINARY  APPROVAL   
 INFORMATION  TENDER  CONSTRUCTION

**Stockton-on-Tees**  
 BOROUGH COUNCIL  
 Big plans, bright future

Economic Growth & Development Services  
 Director of Economic Growth & Development  
 Richard McGuire B.Eng., C.Eng., F.I.C.E.  
 P.O. Box 228, Kingsway House, Billingham, TS23 2YL  
 Tel: 01642 939399 email: egds@stockton.gov.uk

Project  
 Our Lady and St Bede's  
 Stockton  
 TS19 0QH

Content  
 Sports Block  
 Proposed Elevations

Date	23/02/2018	Dwg No.	A10861-100-18
Drawn	EB	Checked	RA
Scale	@ A1	Scale	1:100 @ A1
Rev	P3		